



Basset Hound Rescue of Southern California
P.O. Box 88
Whittier, CA 90608-0088

NON-PROFIT ORG
US POSTAGE PAID
PERMIT NO. 368
WHITTIER, CA

BHRSC sends the newsletter via bulk mail so we can spend more of our money on the hounds! Unfortunately, that means we don't get the newsletters back if they can't be delivered, so if you plan to move, please email us your new address to askabasset@bassethoundrescue.org. And be sure to sign up for our monthly email newsletter on our website or Facebook page!



THE BASSETEER

• AT A GLANCE •

COVER

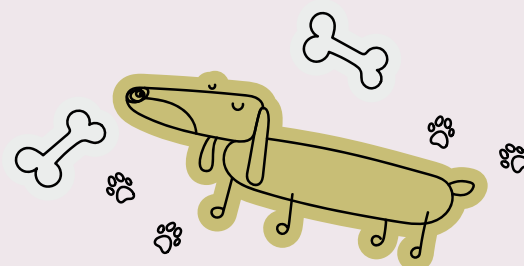
**TORO: READY FOR HIS
FUR-EVER HOME**

PG. 2

**LETTER FROM
THE PRESIDENT**

PG. 3

**2025: THE LONG
& SHORT OF IT**





WWW.BASSETHOUNDRESCUE.ORG

FALL 2025

THE BASSETEER

A PUBLICATION OF BASSET HOUND RESCUE OF SOUTHERN CALIFORNIA



READY FOR A FUR-EVER HOME

- Foster or Forever Home Needed for Toro -

Toro has been waiting in boarding for 6 weeks now, and while our amazing team of volunteers makes sure he gets his daily walks, he truly deserves the comfort of a loving home.

This big, goofy sweetheart is a vet staff favorite — playful, silly, and full of personality.

He LOVES his walks, meeting new people and dogs, and taking in all the smells at the park. He's very dog-friendly and thrives on social interaction.

Right now, Toro is also waiting to see a specialist for a torn CCL (the dog version of an ACL). But he can't move forward with medical care until he has a foster home lined up to support his recovery if surgery is needed.

Because Toro has a history of resource guarding, he'll need a foster or adopter without children, and someone willing to stick to a training plan to help him continue to grow. With structure, patience, and love, he has so much potential — and so much love to give back.

We know the right family is out there for him. Could it be you?

If you're able to foster or adopt Toro, please reach out. If you can't foster, please share his story — it could be the share that helps him find his home.

Every dog deserves a chance, and Toro is more than ready for his.

Unable to adopt or foster right now?
You can help BHRSC start the journey
home for hounds like Toro
by making a donation today!



• Letter from the President •

Hello Fellow Basset Lovers,

Thanks for reading our newsletter; this is just one of the ways we like to keep you updated. Our team has spent some great efforts in putting this newsletter together, so I hope you enjoy reading our updates.

I want to take this opportunity to holler a “thank you” at our generous donors, volunteers, sponsors, and community. So much goes into running this rescue - it’s wonderful to have the support that we do.

Speaking of support, we do have a special need at the moment: We could really use more fosters. We have a couple of hounds in our care that need some special attention and training. They are great dogs; they just need a little extra training in their daily routines. Do you have any time to help with that? The rescue covers all the costs while the fosters focus on giving the hounds the attention and the time they need. Fostering is an essential part of helping a hound find his or her furever home and is very rewarding!

Feel free to reach out to me if you have any questions or concerns; that’s what I am here for.

Thank you!



Casey
President@bassethoundrescue.org



DONATE VIA QR CODE

**If you can't volunteer,
adopt, or foster,
consider donating to
help us save more
hounds!**



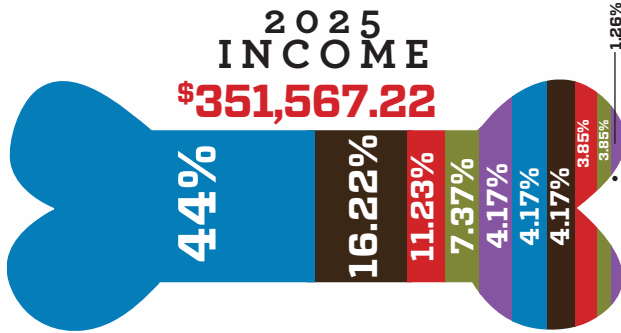
dogma
PET P

LONG & SHORT OF IT

2025

2025 INCOME

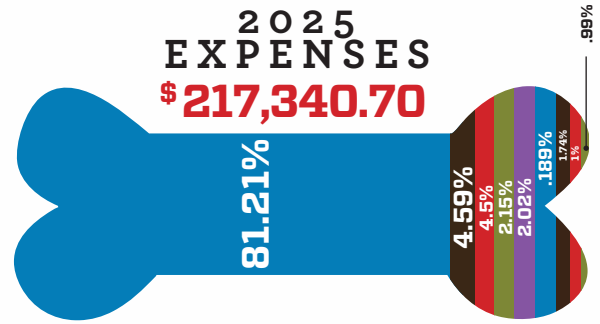
\$351,567.22



● SPECIAL BEQUESTS	\$156,867.71	44%	● TRIBUTES	\$14,660	4.17%
● GENERAL DONATIONS	\$57,027.01	16.22%	● CAMPAIGNS	\$13,550	3.85%
● ADOPTION FEES	\$39,465.50	11.23%	● MERCHANDISE	\$5,822.83	3.85%
● EVENTS	\$25,902.87	7.37%	● OTHER	\$5,822.83	1.26%
● RECURRING DONATIONS	\$22,460.00	4.17%			
● GRANTS	\$14,650.00	4.17%			

2025 EXPENSES

\$217,340.70



● VET EXPENSES	\$176,505.79	81.21%	● FACILITIES & EQUIPMENT	\$4,112.80	1.89%
● OPERATING	\$9,982.13	4.59%	● FEES	\$3,786.92	1.74%
● EVENTS & MERCH	\$9,773.51	4.5%	● DOG FOOD	\$2,170.96	1%
● TAXES & INSURANCE	\$4,668.18	2.15%	● TRAINING/EVALUATION	\$1,949.17	.99%
● NEW HOUNDS	\$4,391.24	2.02%			

VET EXPENSES

